

MEET THE BUYERS

Buyer Catalogue 2025





MEET THE BUYERS



I am delighted to welcome you to the 23rd year of London Stansted's Meet the Buyers, the flagship business event for our region.

Since 2011 our Meet the Buyers events have been hugely successful, generating over £26,072,852 million for local SMEs. Last year's event alone has led to £2.3m worth of opportunities for those who attended.

Today we again have buyers from both private and public sector organisations including BAM Construction, Essex County Council, Volker Fitzpatrick, FADO, Burns McDonnell and many others. Combined they have a purchasing power worth millions of pounds in potential new sales and contracts and business opportunities for local and regional companies.

As always, we are focused on ensuring that buyers and suppliers get to meet as wide a range of businesses as possible, including MAG and the airport's key first and second tier suppliers.

I am very proud that the event adds real value to the economy around the airport by helping local and regional companies win new business and we hope to set another record at today's event. I wish you every success and hope that you have a fantastic and prosperous day.

Gareth Powell

Managing Director, London Stansted Airport

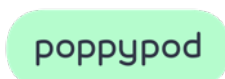


Thank you to our sponsors:

Diamond Sponsor



Event Partners





Crown Oil
Fuels and Lubricants

**YOUR RENEWABLE
FUELS PARTNER**



Looking to switch to a 100% renewable diesel?

HVO fuel reduces net CO₂ emissions by up to 90% - plus it has direct, drop-in functionality and a wide range of OEM approvals, so it doesn't require expensive infrastructure upgrades to make the switch! The benefits include:



Reduces net CO₂ by up to 90%



ISCC verified and RFAS approved



Excellent year-round performance



Approved by a wide range of OEMs



Storage lifespan of up to 10 years



Derived from fully certified waste

We can manage your fuel switch in-house, from the fuel uplift and buyback to the tank clean and HVO delivery - get in touch today.

W: crownoilenvironmental.co.uk | T: 0330 123 3399
E: sales@crownoilenvironmental.co.uk

Find out more about our HVO switch services here:



27th November 2025

Radisson Blu Stansted

Agenda

8:30am - Event registration opens

9:00am - Event introductions

Suzanne McCreedy, Chief Commercial Officer, UMi

Jonathan Fowler, Chief Operating Officer,
London Stansted Airport

Cllr Louise McKinlay, Deputy Leader of Essex
County Council

9:30am - Buyer / Supplier meetings begin

**10:00am - 10:45am - Workshop 1 - London Stansted Airport
Transformation Programme**

Colin Gainsford, Transformation Programme
Director, London Stansted Airport

11:30am - 12:00am - Workshop 2 - Bid and tendering top tips

Stephen Murray, Training Services Manager,
Executive Compass

12:30 - 1:30pm - Lunch Break

**1:45pm - 2:30pm - Workshop 3 - Helping small businesses
achieve big ambitions**

Ann Scott, Regional Business and
Stakeholder Manager, Federation of Small
Businesses

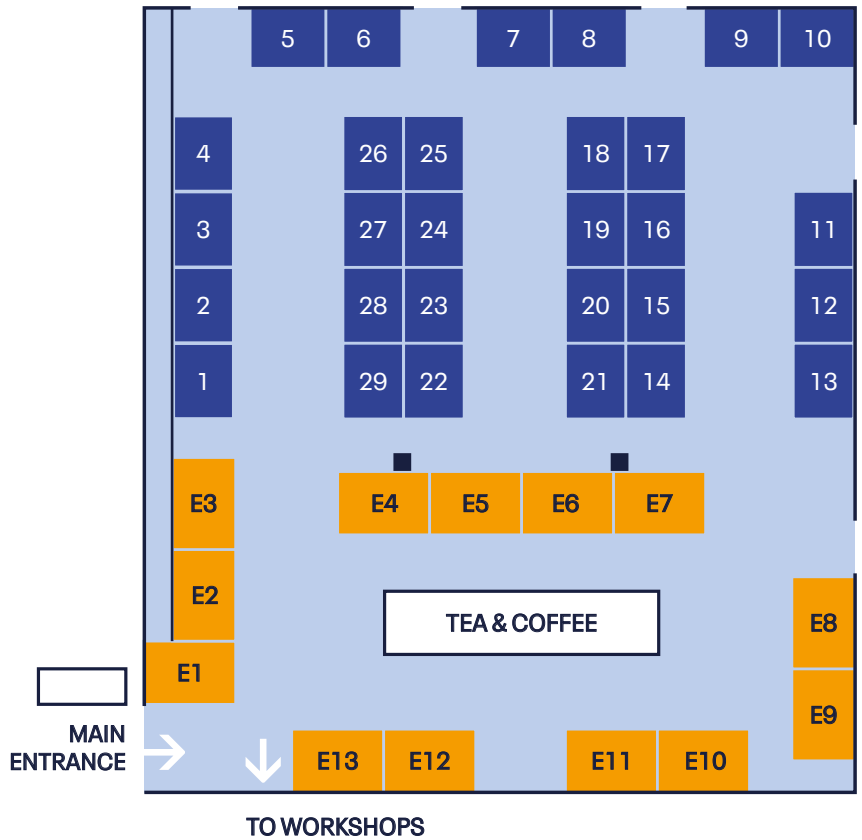
**4:00pm - Buyer / Supplier meetings finish and
event closes**

MEET THE BUYERS

Floorplan

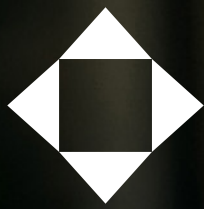
EXHIBITORS

E1	BT Lerson
E2	Poppypod
E3	Speedy Hire
E4	NWF Fuels
E5	Uttlesford Council
E6	GAP Hire Solutions
E7	Paragon
E8	Crown Oil
E9	Hampton by Hilton
E10	Sunbelt Rentals
E11	Nationwide Platforms
E12	Stansted Airport College
E13	Prolectric



BUYERS

1	London Stansted Airport - Business Services	16	Fado
2	London Stansted Airport - Capital Works	17	Galliford Try Asset Intelligence
3	ABM Aviation Ltd	18	HSS Pro Service Marketplace
4	Agilite Solutions	19	Kier
5	AIS UK	20	Lagan Aviation and Infrastructure
6	Allied Infrastructure	21	Lineside Construction
7	AmcoGiffen	22	LPL Construction Services
8	Arup	23	M Group
9	AtkinsRealis	24	Munnelly Support Services
10	BAM	25	North Air
11	Burns and McDonnell	26	The Green Block Consulting Ltd
12	Dalkia EDF Group	27	UK Power Networks
13	DHL Supply Chain	28	VolkerFitzpatrick
14	Durkan Regen	29	Willmott Dixon Construction
15	Essex County Council		



London
Stansted
Airport

MEET THE BUYERS

Our Buyers



kinetics
MARKETING, CREATIVE DESIGN & WEB



Crown Oil
Fuels and Lubricants

Procurement requirements

Engineering & construction

- External Works/Landscaping
- Glaziers
- Groundwork & Drainage

Safety & security

- Access Control/Concierge
- Fire & Safety Equipment
- Security Products Services

Water & plumbing

- Plumbing & Heating Services
- Sanitation Services
- Water Coolers

About

ABM is one of the world's largest providers of integrated facility services. A driving force for a cleaner, healthier, and more sustainable world, ABM provides essential services that improve the spaces and places that matter most.

From roadside to rooftop, ABM offers a comprehensive array of facility services that includes cleaning, engineering, parking, electrical & lighting, energy solutions, HVAC & mechanical, landscape & turf, and mission critical solutions. ABM delivers these custom facility solutions to properties across a wide range of industries – from commercial office buildings to schools, airports, hospitals, data centres, manufacturing plants and distribution centres, entertainment venues and more.

With over 40 years experience in the UK&I, ABM UK&I serves over 1,600 sites, and more than 14,000 team members. Globally ABM have an annualised revenue approaching \$8 billion and are present in 350+ offices throughout the United States, United Kingdom and other international locations. For more information, visit www.abm.co.uk.

Procurement requirements

Consultancy & staffing

- Architectural
- Electrical
- Mechanical

Electrical, mechanical & environmental services

- Electrical Design
- Electrical Installations
- Mechanical Design
- Mechanical Installations

Engineering & construction

- Building Materials - Light side
- Ceilings (Suspended)
- Carpentry/Joinery
- Ceramics
- Cladding/Curtain Walling
- Flooring (Industrial & Commercial)
- Roofing Services
- Scaffolding
- Plant & Plant Hire

Facilities management

- Waste Management

Fit-out & finishing

- Dry Lining/Plastering
- Office Equipment

Marketing, print & events

- Signage

Metalwork

- Architectural Metalwork
- Structural Steelwork

Water & plumbing

- Water Coolers

About

Agilité Solutions is the international commercial interiors specialist with the proactive mindset.

Clients often comment on Agilité being unlike any other international commercial interiors specialist in the market – in fact many actively seek us out because of this differential. And defining exactly what makes us special, is quite simple.

Specialising in office, retail, and hospitality fit outs across Europe, we are unswervingly customer service orientated and offer a bespoke set of service options – from due diligence, sustainability guidance, space planning and design, through to strip out, installation, furniture recycle schemes, dilapidation advice, and final delivery.

Whether clients require one or two elements of guidance, or end-to-end support, projects take shape collaboratively, with strong lines of communication, innovation, and best-value solutions at the heart.

More information is available on our company website; <https://www.agilitesolutions.com/>

Procurement requirements

Consultancy & staffing

- Advertising & Marketing
- Electrical
- Environmental
- Health & Safety
- IT & Systems
- Mechanical
- Recruitment
- Structural
- Training Services

Electrical, mechanical & environmental services

- Electrical Design
- Electrical Installations
- Electronic Components & Supplies
- Energy Maintenance
- Environmental Management
- Environmental Monitoring
- Environmental Technologies
- Lighting (Internal & External)
- Mechanical Design
- Mechanical Installations
- Mechanical Repairs
- Pipework
- Site / Temporary Electrical Installations

Engineering & construction

- Civil Engineering
- Cladding/Curtain Walling
- Diamond Drilling
- Electrical Engineering
- Fabric Maintenance & Support
- Fasteners/Fixings
- Flooring (Industrial & Commercial)
- Groundwork & Drainage
- Mechanical Engineering
- Oils & Lubricants
- Plant & Plant Hire
- Power & Hand Tools
- Structural Components

Facilities management

- Courier Services
- Document Management Systems
- Waste Management

Fit-out & finishing

- Bathroom/Kitchen Fittings
- Fitting-Out Works
- Fixtures, Furnishings, Equipment

Marketing, print & events

- AV Equipment
- Hotel Service & Facilities
- Media Products and Services
- Meetings / Conference Venues
- Online Marketing & PR (Social Media)

Water & plumbing

- Plumbing & Heating Services
- Plumbing Products
- Sanitation Services
- Water Coolers

Safety & security

- Access Control/Concierge
- Fire & Safety Equipment
- ID Cards & Systems
- Mobile & Static Security
- Mobile Communications
- Personal Protective Equipment
- Security Products & Services

About

Airport Integrated Services Ltd provides Electrical and Mechanical solutions to the Commercial, Industrial, HV and Airport Sectors.

The management team have a passion for customer satisfaction, engineering excellence, and attention to detail.

Procurement requirements

Electrical, mechanical & environmental services

- Site / Temporary Electrical Installations

Facilities management

- General Maintenance
- Waste Disposal
- Waste Management

Engineering & construction

- Civil Engineering
- External Works/Landscaping
- Groundwork & Drainage
- Plant & Plant Hire
- Power & Hand Tools

Other

- Survey companies

Safety & security

- Personal Protective Equipment

About

Colas has extensive experience of runway construction and rehabilitation at some of the world's busiest airports and at some of the most remote airports, within the commercial and military sectors.

The challenges of each airport project are unique. Colas has the skills and expertise necessary to ensure that for each project the best solution is identified and delivered efficiently for the client.

Our subsidiary Allied Infrastructure is a multi-disciplined specialist services contractor with 20 years experience of working in high pressure environments and short duration closures on airfields.



DELIVERING PRECISE AND ON TIME FABRICATION AND ENGINEERING WORKS TO A WIDE RANGE OF SECTORS.

As a UKCA accredited company, we hold ISO9001:2015 & AS9100D (dual certification) and ISO1090-1:2009+A1:2011, demonstrating our commitment to meeting the highest standards in structural fabrication

With SafeContractor, Constructionline, Builders Profile and SSIP certifications, we offer high-quality services from small metalwork fabrication to large complex construction projects

TAILORED SOLUTIONS TO YOUR ENGINEERING NEEDS

We pride ourselves on having the capability to manage complex projects from start to finish.

Our 20,000 sq. ft state-of-the-art facility allows us the capability to provide precise and efficient solutions, from start to finish, tailored to the needs of our clients.

With a dedicated team of experienced coded welders and steel erectors, we deliver precise and reliable structural fabrication solutions



GET IN TOUCH

Email: enquiries@btlerson.co.uk

Tel: 01279 461397

Website: www.btlerson.co.uk



Procurement requirements

Engineering & construction

- Civil Engineering
- Diamond Drilling
- Groundwork & Drainage
- Mechanical Engineering
- Plant & Plant Hire
- Power & Hand Tools

Facilities management

- Waste Disposal
- Waste Management

About

At AmcoGiffen, we inspire progression through collaborative infrastructure delivery. Working closely with clients and supply chain partners in a one-team approach, to provide trusted insight and innovation, alongside robust design and delivery solutions.

With an active presence in over 80 national frameworks, we bring more than 50 years of experience to projects with our localised knowledge, strengths and expertise. Our expert teams work with over 25 regional and national clients in multiple sectors including transport, energy, environment and aviation.

Procurement requirements

Consultancy & staffing

- Structural
- Mechanical
- Quantity Surveying & Cost Consultancy
- Environmental
- Health & Safety
- Architectural

Metalwork

- Structural Steelwork

Electrical, mechanical & environmental services

- Mechanical Design
- Environmental Management
- Electrical Design
- Civil Engineering

About

Arup has been involved in aviation developments for more than 60 years, with experience gained through a wide range of assignments at more than 100 airports worldwide. We have advised the majority of the world's leading airports and are recognised globally as a leader in airport masterplanning, delivering airport terminal and support facility designs, infrastructure, airside civils and specialist aviation services.

Arup is the Airfield Designer at London Stansted Airport, Manchester Airport and East Midlands Airport. Services include: Pavement design and inspection, AGL, Airfield Systems, Airfield Equipment specification, Airfield Planning, Principal Designer Services, Project Management Services.

Procurement requirements

Consultancy & staffing

- Architectural
- Electrical
- Environmental
- Health & Safety
- IT & Systems
- Mechanical
- Quantity Surveying & Cost Consultancy
- Structural

Fit-out & finishing

- Interior Design

Electrical, mechanical & environmental services

- Electrical Design
- Environmental Technologies
- Mechanical Design

About

Created by the integration of long-standing organizations dating back to 1911, AtkinsRéal is a world-class engineering services and nuclear company dedicated to engineering a better future for our planet and its people.

We create sustainable solutions that connect people, data and technology to transform the world's infrastructure and energy systems. We deploy global capabilities locally to our clients and deliver unique end-to-end services across the whole life cycle of an asset including consulting, advisory & environmental services, intelligent networks & cybersecurity, design & engineering, procurement, project & construction management, operations & maintenance, decommissioning and capital.

The breadth and depth of our capabilities are delivered to clients in strategic sectors such as Engineering Services, Nuclear and Capital. News and information are available at www.atkinsrealis.com or follow us on LinkedIn.

Procurement requirements

Consultancy & staffing

- Electrical
- Mechanical
- Structural

Electrical, mechanical & environmental services

- Electrical Design
- Electrical Installations
- Electronic Components & Supplies
- Energy Maintenance
- Environmental Management
- Environmental Monitoring
- Environmental Technologies
- Lighting (Internal & External)
- Mechanical Installations
- Mechanical Repairs
- Pipework

Engineering & construction

- Bricklayers
- Building Materials - Heavy side
- Building Materials - Light side
- Carpentry/Joinery
- Ceilings (Suspended)
- Ceramics
- Civil Engineering
- Cladding/Curtain Walling
- Diamond Drilling
- Electrical Engineering
- External Works/Landscaping
- Fabric Maintenance & Support
- Falsework & Formwork
- Flooring (Industrial & Commercial)
- Glaziers
- Groundwork & Drainage
- Mechanical Engineering
- Oils & Lubricants
- Power & Hand Tools
- Roofing Services
- Scaffolding

Facilities management

- Cleaning & Janitorial Services
- General Maintenance
- Housing & Property Management
- Utilities
- Waste Disposal
- Waste Management

Fit-out & finishing

- Doors (Metal/Timber/Other)
- Dry Lining/Plastering
- Fitting-Out Works
- Fixtures, Furnishings, Equipment
- Interior Design
- Painters & Decorators
- Surface Coatings/Paints

Metalwork

- Architectural Metalwork
- Fencing & Gates
- Small Metal Products
- Structural Steelwork

Water & plumbing

- Plumbing & Heating Services
- Plumbing Products
- Sanitation Services

About

We are BAM UK & Ireland, part of the Royal BAM Group. For 150 years, we have been shaping the UK & Ireland's vital infrastructure and creating many of the country's most iconic buildings.

We deliver construction, civil engineering, infrastructure, property development and facilities management projects in the public and private sectors. We use the latest digital technologies and modern methods of construction to deliver in a lean, green, and more efficient way.

We want to leave our world a better place than we found it – to build a more sustainable tomorrow. We've set an industry-leading carbon target to become net zero in our direct operations by 2026 and we're supporting our clients to create more sustainable places.

Visit us at: <https://ukandireland.bam.com>

BAM is proud to be supporting MAG's Meet the Buyer event. We embrace a culture of partnership and forge strong alliances with both our clients and our supply chain partners.

People are at the heart of everything we do. We employ great people, who we value and support. We prioritise our relationships with our client and supply chain partners. And we strive to strengthen communities and transform lives in the places where we work, leaving a lasting social impact legacy.



GAP HIRE SOLUTIONS

GAP Hire Solutions is the UK's leading equipment hire company, offering a comprehensive range of construction equipment across all sectors through our specialist divisions in over 200 locations. As a family-owned business with over 50 years of experience, GAP reinvests a higher percentage of our turnover into our fleet than our competitors, ensuring customers benefit from access to world-class equipment. With extensive investments in people, premises, and technology, we ensure reliable service that our customers can trust.

GAP drives innovation through substantial investment in technology and digitalisation, making us the hire company of choice across the UK.

- PLANT HIRE
- TOOL HIRE
- LIFTING SERVICES
- PUMP SERVICES
- POWER GENERATION
- ENVIRONMENTAL SERVICES
- SURVEY & SAFETY
- TANKER SERVICES
- TRENCHING & SHORING
- WELFARE SERVICES
- NON-MECHANICAL PLANT
- EVENT SERVICES



HIRE SOLUTIONS



www.gap-group.co.uk

03330 094 153

Procurement requirements

Consultancy & staffing

- Environmental
- Health & Safety
- Training Services

Fit-out & finishing

- Interior Design

Electrical, mechanical & environmental services

- Energy Maintenance
- Lighting (Internal & External)

About

At Burns & McDonnell, our engineers, architects, construction professionals, scientists, and consultants do more than plan, design, and construct. With a mission unchanged since 1898 — make our clients successful — our more than 14,000 employee-owners partner with you to solve the toughest challenges, constantly working to make the world an amazing place. We tackle projects that address critical engineering and design- build construction needs across multiple industries.

We deliver flexible, innovative, and cost-effective solutions backed by our employee-owners worldwide. Our approach to every project focuses on your success. We will work with steel contractors to achieve more constructible and economical designs. From master planning and site selection to environmental permitting and compliance to integrated design-build delivery, we provide comprehensive engineering, architecture, and construction experience for projects across all industries. We best serve our clients as the lead program manager/technical advisor throughout the life cycle of a project or program. Our services cover all market sectors to bring you and your projects seamless breadth and depth of knowledge and skills.

Mission Critical Design and Construction

Aviation

Commercial, Retail & Institutional

Construction

Energy

Environmental

Government, Military & Municipal

Manufacturing & Industrial

Oil, Gas & Chemical

Transmission & Distribution

Transportation

Water

Procurement requirements

Consultancy & staffing

- Electrical
- Mechanical
- Quantity Surveying & Cost Consultancy

Electrical, mechanical & environmental services

- Electrical Design
- Mechanical Design

Fit-out & finishing

- Dry Lining/Plastering
- Fitting-Out Works
- Painters & Decorators

Metalwork

- Fencing & Gates
- Small Metal Products
- Structural Steelwork
- Welding

About

Engineering Services

Solving your toughest challenges through excellence in engineering.

Partnering with our customers, we co-create, design and deliver energy-efficient mechanical, electrical and public health solutions faster, safer and better than ever before. Guided by our value-added approach and bolstered by the latest technologies, tools and engineering techniques, our expert team will support you throughout the project lifecycle, from design to commissioning, completion and aftercare, ensuring complete satisfaction.



Procurement requirements

Consultancy & staffing

- Architectural
- Environmental
- Health & Safety
- IT & Systems

Electrical, mechanical & environmental services

- Environmental Management
- Environmental Monitoring
- Environmental Technologies

Engineering & construction

- Civil Engineering

Facilities management

- Fleet Management
- Interior Design
- Office Equipment
- Transport & Logistics
- Waste Disposal
- Waste Management

IT services

- IT Hardware

Marketing, print & events

- Signage

Safety & security

- Fire & Safety Equipment
- Personal Protective Equipment

About

At DHL, we are committed to redefining the aviation experience through seamless, efficient, and sustainable solutions. And as the world's leading global logistics company with our very own airline, we have an unparalleled understanding of your aviation needs.

Our team of certified aviation experts can help you implement a dynamic and performance-driven operation that will elevate your standards. With safety, innovation, and efficiency at the heart of everything we do, you can rely on us to enhance the passenger experience and boost colleague engagement. Together, we can transform every moment on the ground into a smooth and memorable journey, ensuring that flights take off and land with confidence, reliability, and a touch of care

Your Aviation MEWP Specialist



Powered
Access hire



Working at
Height
training



Safety
Innovations



Digital account
management
services



Nationwide
availability



UK's largest
powered
access fleet

Nationwide Platforms
0345 745 0000



Contribution
to Safe
Working
at Height



Contribution
to Safe
Working
at Height



Innovative
Technology
Prize
(Harness ON)

 **Nationwide
Platforms**
A **LOXAM** Company



**YOUR
SAFETY
OUR
PRIORITY**



0345 745 0000
nationwideplatforms.co.uk

Procurement requirements

Electrical, mechanical & environmental services

- Electrical Installations
- Mechanical Installations
- Mechanical Repairs

Engineering & construction

- Carpentry/Joinery
- Ceilings (Suspended)
- Ceramics
- Cladding/Curtain Walling
- Electrical Engineering
- External Works/Landscaping
- Fabric Maintenance & Support
- Flooring (Industrial & Commercial)
- Glaziers
- Mechanical Engineering
- Roofing Services
- Scaffolding

Fit-out & finishing

- Bathroom/Kitchen Fittings
- Doors (Metal/Timber/Other)
- Dry Lining/Plastering
- Fitting-Out Works
- Fixtures, Furnishings, Equipment
- Painters & Decorators
- Surface Coatings/Paints
- Windows (UPVC, Metal, Timber)

Metalwork

- Architectural Metalwork
- Fencing & Gates
- Ironmongery/Locks

Safety & security

- Fire & Safety Equipment

Water & plumbing

- Plumbing & Heating Services

About

Durkan Regen is built on Durkan's 50+ years' experience supporting local authorities and housing associations. It provides services including asset regeneration, planned maintenance, compliance services including damp and mould, fire remediation, general repairs, cladding remediation, retrofit and decarbonisation



Procurement requirements

Consultancy & staffing

- Advertising & Marketing
- Architectural
- Electrical
- Environmental
- Health & Safety
- IT & Systems
- Recruitment
- Training Services
- Translation Services

Electrical, mechanical & environmental services

- Electrical Design
- Electrical Installations
- Electronic Components & Supplies
- Energy Maintenance
- Environmental Management
- Environmental Monitoring
- Environmental Technologies
- Lighting (Internal & External)
- Mechanical Design
- Mechanical Installations
- Mechanical Repairs
- Pipework
- Site / Temporary Electrical Installations

Engineering & construction

- Building Materials - Heavy side
- Building Materials - Light side
- Civil Engineering
- External Works/Landscaping
- Fabric Maintenance & Support
- Glaziers
- Groundwork & Drainage
- Mechanical Engineering
- Oils & Lubricants
- Plant & Plant Hire
- Roofing Services
- Scaffolding

Facilities management

- Cleaning & Janitorial Services
- Fleet Management
- Food Provision / Catering Services
- General Maintenance
- Housing & Property Management
- Telecommunications
- Transport & Logistics
- Utilities
- Vehicle Purchase & Leasing
- Waste Disposal
- Waste Management

Fit-out & finishing

- Doors (Metal/Timber/Other)
- Dry Lining/Plastering
- Fixtures, Furnishings, Equipment
- Interior Design
- Office Equipment
- Painters & Decorators
- Windows (UPVC, Metal, Timber)

IT services

- IT Hardware
- IT Maintenance & Support
- IT Software Developments

Metalwork

- Architectural Metalwork
- Fencing & Gates
- Structural Steelwork
- Welding

Safety & security

- Fire & Safety Equipment
- Mobile Communications
- Personal Protective Equipment
- Security Products & Services

Water & plumbing

- Plumbing & Heating Services
- Plumbing Products
- Sanitation Services

About

FA number of Local Authorities across Essex are working together to jointly undertake procurement, as part of a collaboration called The Essex Procurement Partnership.

The members of this partnership are:

- Braintree District Council
- Castle Point Borough Council
- Epping Forest District Council
- Essex County Council
- Tendring District Council

These Authorities together spend circa. £1.4 billion annually on goods, services and works with external organisations.

Collaboration with suppliers, public sector partners, communities and residents is key to meeting each organisations priorities and delivering the best outcomes for residents within the financial means. The Essex Procurement Partnership seeks to support an innovative, commercial and entrepreneurial culture across the areas it supports and is keen to meet with suppliers who can help in delivering this.

Procurement requirements

Consultancy & staffing

- Architectural
- Structural

Electrical, mechanical & environmental services

- Electrical Design
- Electrical Installations
- Electrical Components & Supplies
- Environmental Management
- Environmental Monitoring
- Environmental Technologies
- Lighting (Internal & External)
- Mechanical Design
- Mechanical Installations
- Mechanical Repairs
- Pipework
- Site / Temporary Electrical Installations

Engineering & construction

- Bricklayers
- Building Materials - Heavy side
- Building Materials - Light side
- Carpentry/Joinery
- Ceilings (Suspended)
- Ceramics
- Civil Engineering
- Cladding/Curtain Walling
- Diamond Drilling
- Electrical Engineering
- External Works/Landscaping
- Fabric Maintenance & Support
- Falsework & Formwork
- Fasteners/Fixings
- Flooring (Industrial & Commercial)
- Glaziers
- Groundwork & Drainage
- Mechanical Engineering
- Plant & Plant Hire
- Power & Hand Tools
- Roofing Services
- Scaffolding
- Structural Components
- Timber

Fit-out & finishing

- Bathroom/Kitchen Fittings
- Doors (Metal/Timber/Other)
- Dry Lining/Plastering
- Fitting-Out Works
- Fixtures, Furnishings, Equipment
- Interior Design
- Office Equipment
- Painters & Decorators
- Relocation/Removals
- Surface Coatings/Paints
- Windows (UPVC, Metal, Timber)

Metalwork

- Architectural Metalwork
- Structural Steelwork

Water & plumbing

- Plumbing & Heating Services
- Plumbing Products
- Sanitation Services
- Water Coolers

About

As a trusted delivery partner of MAG. We are a national main contracting business and a trading division of Northstone (NI) Limited.

With offices in London, Cambridge, Leeds and Belfast, we support clients nationwide, creating innovative spaces in multiple sectors, including Commercial, Education, Health, Retail, Infrastructure and Hospitality. Fado are Refurbishment and Interiors Specialists whose work is driven by collaboration and creativity. When delivering the best, we want to work with the best. Are you interested in working with Fado to deliver world-class projects? Then we would love to hear from you. We are a company that values quality: Fado is committed to delivering projects that meet and exceed client expectations. We rely on the best suppliers to help us achieve this.

The benefits of becoming a supplier of Fado means you will be part of a community of over 46,000 suppliers visible to over 8,000 buyers. Additionally, as a Constructionline member we will store all your pre-qualification data on the Constructionline platform, saving you from completing multiple pre-qualifications every year.

APPROACHABLE. RESPONSIBLE. CONNECTED.



Fuelling Britain, fanatical about service.

That's NWF Fuels.

- ✓ Bulk Fuels
- ✓ Broad Coverage
- ✓ Brilliant Service
- ✓ Fuel Cards

 0331 630 5370

 bulk.enquiries@nwffuels.co.uk

 www.nwffuels.co.uk/enquiry/

 www.nwffuels.co.uk



Procurement requirements

Consultancy & staffing

- Electrical
- Mechanical

Electrical, mechanical & environmental services

- Electrical Installations
- Electronic Components & Supplies
- Lighting (Internal & External)
- Mechanical Installations
- Mechanical Repairs

Engineering & construction

- Civil Engineering
- Electrical Engineering
- Mechanical Engineering

Fit-out & finishing

- Doors (Metal/Timber/Other)

Safety & security

- Access Control/Concierge
- Fire & Safety Equipment
- ID Cards & Systems
- Security Products & Services

About

Part of Galliford Try Group, Award-winning Asset Intelligence (GTAI) partner with end user organisations and asset owners to deliver high quality integrated specialist service solutions anywhere in the UK.

GTAI deliver turn-key consultancy, design, installation and delivery, and maintenance of specialist assets across the Stansted estate. Nationally, Whole life cost reduction is pioneered through expert delivery of end-to-end services, protecting strategic and high importance buildings and assets, with programme values ranging from <£0.5m - £35m+.

With a focus on building systems, Fire, Security M&E and specialist services, as Principal Contractor to Stansted Airport, GTAI are looking for a range of supply chain disciplines to support future work across the site.

HSS Pro Service Marketplace

Stand 18



Procurement requirements

Electrical, mechanical & environmental services

- Electrical Installations
- Mechanical Installations

Engineering & construction

- Plant & Plant Hire

Fit-out & finishing

- Fitting-Out Works

About

HSS Hire is an airside approved, supplier for tool and equipment hire and training services.

The overall goals of our service provision is designed to promote price transparency, ensure cross-hire of equipment on site where appropriate, fulfil training requirements and enhance environmental performance. HSS Hire is committed to these aims.

Our leading service has a host of proven benefits:

- Dedicated 24 hour Airport Hire Desk
- Great value rates continually updated
- Airside delivery
- Mobile airside fitter assistance
- Dedicated Airport site representatives
- Unparalleled service levels including site clearance to deadline
- Best in class tools & equipment
- HSS OneCall service for hard to source kit
- Instant online ordering and management information in real time
- Environmental benefits from consolidated deliveries
- Over 250 industry approved and accredited training courses

Procurement requirements

Consultancy & staffing

- Electrical
- Environmental
- Health & Safety
- IT & Systems
- Mechanical
- Quantity Surveying & Cost Consultancy
- Structural

Electrical, mechanical & environmental services

- Electrical Design
- Electrical Installations
- Electronic Components & Supplies
- Energy Maintenance
- Environmental Management
- Environmental Monitoring
- Environmental Technologies
- Lighting (Internal & External)
- Mechanical Design
- Mechanical Installations
- Mechanical Repairs
- Pipework
- Site / Temporary Electrical Installations

Engineering & construction

- Bricklayers
- Building Materials - Heavy side
- Building Materials - Light side
- Carpentry/Joinery
- Ceilings (Suspended)
- Ceramics
- Civil Engineering
- Cladding/Curtain Walling
- Diamond Drilling
- Electrical Engineering
- External Works/Landscaping
- Fabric Maintenance & Support
- Falsework & Formwork
- Flooring (Industrial & Commercial)
- Glaziers
- Groundwork & Drainage
- Mechanical Engineering
- Plant & Plant Hire
- Power & Hand Tools
- Roofing Services
- Scaffolding
- Structural Components
- Timber

Fit-out & finishing

- Bathroom/Kitchen Fittings
- Doors (Metal/Timber/Other)
- Dry Lining/Plastering
- Fitting-Out Works
- Fixtures, Furnishings, Equipment
- Painters & Decorators
- Surface Coatings/Paints
- Windows (UPVC, Metal, Timber)

Metalwork

- Structural Steelwork

Safety & security

- Fire & Safety Equipment
- Personal Protective Equipment

Water & plumbing

- Plumbing & Heating Services
- Plumbing Products
- Sanitation Services
- Water Coolers

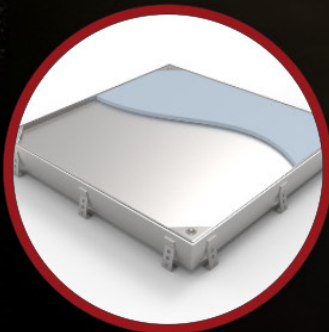
About

We are a leading UK construction, infrastructure services and property development company, committed to delivering for communities and leaving lasting legacies through our work. Kier's purpose is to sustainably deliver infrastructure which is vital to the UK.

01206 574374 - sales@paragon-stainless.co.uk
www.paragon-stainless.co.uk

WHERE STRENGTH MEETS STYLE

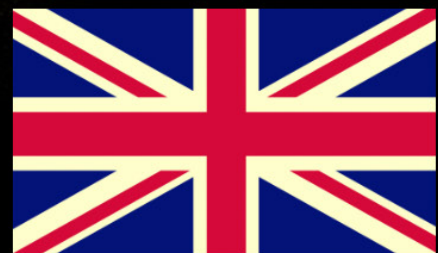
- Drainage Channel
- Drainage Gullies
- Access Covers
- Stair Treads
- Grates
- Handrails
- Sinks
- Plus lots more..



**BRITAIN'S NO.1
MANUFACTURER
OF GRADE
316L/304
STAINLESS STEEL
PRODUCTS**



**PARAGON
STAINLESS**
PRODUCTS



Lagan Aviation & Infrastructure

Stand 20



Procurement requirements

Consultancy & staffing

- Health & Safety
- Quantity Surveying & Cost Consultancy
- Recruitment
- Training Services

Safety & security

- ID Cards & Systems

Engineering & construction

- Building Materials - Heavy side
- Civil Engineering
- Diamond Drilling
- Falsework & Formwork
- Groundwork & Drainage
- Plant & Plant Hire

About

Lagan Aviation & Infrastructure is a leader in the construction and maintenance of airport and military infrastructure worldwide. Our teams are highly experienced in providing the engineering skills and technologies needed to build in security critical environments.

Procurement requirements

Engineering & construction

- Bricklayers
- Building Materials - Heavy side
- Building Materials - Light side
- Carpentry/Joinery
- Ceilings (Suspended)
- Ceramics
- Chemical Engineering
- Civil Engineering
- Cladding/Curtain Walling
- Diamond Drilling
- Electrical Engineering
- External Works/Landscaping
- Fabric Maintenance & Support
- Falsework & Formwork
- Fasteners/Fixings
- Flooring (Industrial & Commercial)
- Glaziers
- Groundwork & Drainage
- Mechanical Engineering
- Oils & Lubricants
- Plant & Plant Hire
- Power & Hand Tools
- Roofing Services
- Scaffolding
- Structural Components
- Timber

Fit-out & finishing

- Bathroom/Kitchen Fittings
- Doors (Metal/Timber/Other)
- Dry Lining/Plastering
- Fitting-Out Works
- Fixtures, Furnishings, Equipment
- Interior Design
- Office Equipment
- Painters & Decorators
- Relocation/Removals
- Surface Coatings/Paints
- Windows (UPVC, Metal, Timber)

About

MAG is a leading UK airport group that owns and operates Manchester, London Stansted and East Midlands airports, together with a significant property business

London Stansted Airport Business Services

Stand 1



Procurement requirements

Facilities management

- Document Management Systems
- Fleet Management

IT services

- IT Hardware
- IT Maintenance & Support
- IT Software Developments

About

MAG is a leading UK airport group that owns and operates Manchester, London Stansted and East Midlands airports, together with a significant property business



Procurement requirements

Consultancy & staffing

- Electrical
- Mechanical

Electrical, mechanical & environmental services

- Electrical Installations

Engineering & construction

- Civil Engineering
- Groundwork & Drainage
- Roofing Services

Facilities management

- General Maintenance
- Utilities

About

Line Side Construction Limited are a leading construction and consultancy company operating in all areas of rail infrastructure throughout the United Kingdom.

We are specialists in the delivery of construction, civils, rail and utilities projects.

Our activities comprise of a multitude of disciplines with proven expertise reflecting the business needs of our clients. We are recognised as both a proactive and responsive company which delivers to the highest level of both Safety and Quality.

We are able to deliver a skilled workforce with the relevant skills and qualifications to ensure your project is completed safely and efficiently, including project management and the provision of consultancy services. We have a passion for implementing time critical and challenging projects.

poppypod

Calm where it's needed most.

Poppypod is a standalone sensory pod that creates a private retreat in the middle of the terminal. Designed for neurodivergent travellers and anyone who feels overwhelmed, it helps reduce stress and restore calm — exactly when it's needed.



Flexible placement
at gates, check-in, or
security.



Complementary
enhances, not replaces,
sensory rooms.



Low-maintenance
Standalone, compact,
easy to manage.



Smart portal
real-time usage data
to prove impact.

Discover how Poppypod can transform your airport
+44 (0) 1772 394 199 | info@poppypod.com | www.poppypod.com

Procurement requirements

Consultancy & staffing

- Architectural
- Electrical
- Environmental
- Mechanical
- Quantity Surveying & Cost Consultancy
- Structural

Electrical, mechanical & environmental services

- Electrical Design
- Electrical Installations
- Energy Maintenance
- Environmental Management
- Environmental Monitoring
- Environmental Technologies
- Mechanical Design
- Pipework

Engineering & construction

- Building Materials - Heavy side
- Carpentry/Joinery
- Ceilings (Suspended)
- Cladding/Curtain Walling
- Electrical Engineering
- Fabric Maintenance & Support
- Flooring (Industrial & Commercial)
- Glaziers
- Groundwork & Drainage
- Mechanical Engineering
- Roofing Services
- Scaffolding
- Structural Components

Fit-out & finishing

- Doors (Metal/Timber/Other)
- Dry Lining/Plastering
- Fitting-Out Works
- Fixtures, Furnishings, Equipment
- Surface Coatings/Paints

Metalwork

- Architectural Metalwork
- Fencing & Gates
- Small Metal Products
- Structural Steelwork
- Welding

Safety & Security

- Fire & Safety Equipment

Water & plumbing

- Plumbing & Heating Services
- Plumbing Products

About

LPL takes immense pride in the work we perform for MAG. Our daily tasks are wide-ranging and varied, ensuring that each day brings new challenges and experiences. This diversity in our work keeps us constantly engaged and motivated, making our job both exciting and fulfilling.

The transformation of Stansted into an industry-leading aviation provider is progressing at an impressive pace. LPL is actively contributing to this evolution by supporting a wide array of projects. We deliver quick startups, employ cutting-edge designs, and create unique modular building structures. All of this is achieved within a dynamic and operationally active environment, showcasing our ability to adapt and excel under varying conditions.

London Stansted Airport is a truly unique place, characterised by its unparalleled passion and drive for change. This commitment to innovation and progress is something that cannot be replicated elsewhere. LPL is honoured to be part of this journey, contributing to the airport's ongoing development, and helping to shape its future. Our involvement in these projects not only highlights our expertise but also reinforces our dedication to supporting MAG in achieving its ambitious goals.

Procurement requirements

Consultancy & staffing

- Architectural
- Electrical
- Environmental
- Mechanical
- Structural

Electrical, mechanical & environmental services

- Electrical Design
- Electrical Installations
- Electronic Components & Supplies
- Environmental Management
- Environmental Monitoring
- Lighting (Internal & External)
- Mechanical Design
- Mechanical Installations
- Site / Temporary Electrical Installations

Engineering & construction

- Bricklayers
- Building Materials - Light side
- Ceilings (Suspended)
- Civil Engineering
- Cladding/Curtain Walling
- Diamond Drilling
- Electrical Engineering
- External Works/Landscaping
- Fabric Maintenance & Support
- Falsework & Formwork
- Flooring (Industrial & Commercial)
- Groundwork & Drainage
- Mechanical Engineering
- Plant & Plant Hire
- Roofing Services
- Scaffolding
- Structural Components

Facilities management

- Utilities
- Waste Disposal

Fit-out & finishing

- Doors (Metal/Timber/Other)
- Dry Lining/Plastering
- Fitting-Out Works
- Painters & Decorators
- Surface Coatings/Paints
- Windows (UPVC, Metal, Timber)

Metalwork

- Architectural Metalwork
- Structural Steelwork
- Welding

Safety & security

- Fire & Safety Equipment
- ID Cards & Systems
- Mobile & Static Security

Water & plumbing

- Plumbing & Heating Services

About

Right across infrastructure, there's a requirement to not only maintain, but also renew and reimagine. For everyday life. And for sustainable life. It's a huge task.

At M Group, we work with private and public sector organisations across water, energy, transport (highways, rail and aviation) and telecom, delivering essential infrastructure services, with more than 11,000 people, over 200 locations and a heritage of more than a century.

We're constantly evolving, building our reach and growing our skills, so we can continue to deliver at the pace of change. M Group: essential infrastructure services for life.

Munnelly Support Services

Stand 24



Procurement requirements

Consultancy & staffing

- Architectural
- Environmental
- IT & Systems
- Training Services

Electrical, mechanical & environmental services

- Site / Temporary Electrical Installations

Engineering & construction

- Building Materials - Light side
- Plant & Plant Hire
- Scaffolding

Facilities management

- Catering Equipment
- Cleaning & Janitorial Services
- Fleet Management
- General Maintenance
- Vehicle Purchase & Leasing
- Waste Disposal

Fit-out & finishing

- Fixtures, Furnishings, Equipment

IT services

- IT Maintenance & Support

Marketing, print & events

- Hotel Service & Facilities
- Meetings / Conference Venues

Metalwork

- Fencing & Gates

Safety & security

- Fire & Safety Equipment
- Personal Protective Equipment

About

Founded in 1982, Munnelly Support Services is a leading construction logistics company, operating nationwide. We serve a diverse range of sectors within the UK construction industry to include aviation & transport, residential, commercial, education, healthcare, energy, infrastructure and leisure.

Our focus is on delivering practical on-site solutions that aid project delivery while ensuring a safe and risk-free construction environment. Our experience allows our clients to focus on the core deliverables at every phase of their project.

Our expertise encompasses all aspects of logistics, pre -planning, traffic management, delivery coordination, material handling, consolidation, plant management, security, welfare services, multiservice and waste management.

Procurement requirements

Consultancy & staffing

- Electrical
- Environmental
- Mechanical

Electrical, mechanical & environmental services

- Electrical Design
- Electrical Installations
- Lighting (Internal & External)
- Mechanical Design
- Mechanical Installations
- Mechanical Repairs
- Pipework

Engineering & construction

- Civil Engineering
- Electrical Engineering
- Fabric Maintenance & Support
- Mechanical Engineering

Facilities management

- Waste Disposal
- Waste Management

Marketing, print & events

- Signage

Safety & security

- Fire & Safety Equipment
- Mobile & Static Security
- Security Products & Services

Water & plumbing

- Plumbing & Heating Services

About

With our commitment and expertise, the mission of North Air is simple; to be the safest and most successful into-plane fuelling company in the UK delivering the very best customer experience in the market we serve. Fuelling excellence is our minimum standard



OFF-GRID POWER AND LIGHTING SPECIALISTS

As the UK's leading off-grid renewable lighting and power experts, we deliver:

- Solar Generators and BESS
- Solar Lighting Towers
- Solar Street Lighting
- Solar CCTV Towers

By switching just one traditional diesel generator to our ProPower Solar Hybrid Generator, you could save on average **9,473** litres of fuel annually, equivalent to **£17,382** in operational costs and mitigate **25,388** kg of CO₂e.



Since 2017,
our customers
have saved



41,019,514
Carbon Savings
(Kg of CO₂e)



15,571,811
Diesel Savings
(Litres)



£19,102,995
Cost Savings
(GBP)

Procurement requirements

Consultancy & staffing

- Environmental

Marketing, print & events

- Signage

Electrical, mechanical & environmental services

- Environmental Management
- Environmental Monitoring

Safety & security

- ID Cards & Systems
- Personal Protective Equipment

Facilities management

- Waste Disposal
- Waste Management

Fit-out & finishing

- Fixtures, Furnishings, Equipment
- Office Equipment

About

The Green Block (TGB) are an industry-leading and disruptive waste management company within the transportation and retail sectors, pioneering on site waste segregation through our patented Mobile Segregation Unit (MSU).

We specialise in practical, data-driven waste segregation solutions that increase recycling rates, reduce carbon emissions, and challenge the status quo of traditional waste management.

As a proud partner of London Stansted Airport, TGB is working collaboratively to deliver measurable improvements in recycling performance and environmental impact.

Our mission is simple: to redesign and reimagine waste. By combining operational excellence with a commitment to innovation and environmental responsibility, TGB is shaping the future of sustainable resource management.

Procurement requirements

Consultancy & staffing

- Electrical
- Environmental

Electrical, mechanical & environmental services

- Electrical Design
- Electrical Installations
- Mechanical Design

Engineering & construction

- Civil Engineering
- Groundwork & Drainage
- Mechanical Engineering
- Plant & Plant Hire
- Scaffolding

Facilities management

- Waste Disposal
- Waste Management

About

We solve your energy challenges through innovative solutions, delivering resilience, cost efficiency and sustainability to deliver a bright energy future. We are at the forefront of the energy transition, enabling the decentralisation of energy to a more sustainable, affordable and secure system.

Through our inspired thinking, assured solutions, integrated delivery and long-term expertise, we deliver safe, reliable and innovative bespoke energy solutions enabling you to concentrate on your core business. Employing world-class engineers and professionals, we pride ourselves on the expertise of our people to create long-term strategic partnerships and deliver for our clients.

Procurement requirements

Electrical, mechanical & environmental services

- Pipework

Engineering & construction

- Building Materials - Heavy side
- Civil Engineering
- Civil Engineering
- External Works/Landscaping
- External Works/Landscaping
- Groundwork & Drainage
- Groundwork & Drainage

Metalwork

- Fencing & Gates
-

About

VolkerFitzpatrick is one of the leading engineering and construction companies in the UK. We provide specialist multi-disciplinary engineering solutions to a wide range of markets to deliver a truly integrated service for our clients. We are proud to say our history dates back over 100 years, and currently turns over more than £600m per year, ensuring we are able to meet the growing demands of today's construction industry.

Our specialist capabilities are the heart of our business; as a supply chain partner we work nationally to solve complex challenges in all kinds of diverse environments. Our proven expertise in delivering successful projects in a wide range of sectors include rail and depots, buildings, highways, airports, ports and defence.

We have a long and successful association with various airport operators across the UK and have gained a reputation for innovation and best practice through the delivery of over 55 aviation related projects in the last 10 years.

Our capability extends from runway, taxiway and apron rehabilitation, including the replacement and upgrade of all associated infrastructure such as Airfield Ground Lighting (AGL), drainage, line marking and mechanical and electrical systems, to landside infrastructure works such as access roads, car parks, flood attenuation and external security gates.

Willmott Dixon Construction

Stand 29



Procurement requirements

Consultancy & staffing

- Architectural
- Electrical
- Mechanical
- Quantity Surveying & Cost Consultancy
- Structural

Engineering & construction

- Civil Engineering

Metalwork

- Architectural Metalwork

About

Since 1852, when John Willmott founded our company, we've been driven by a simple belief: great construction creates lasting societal value. Today, under CEO Graham Dundas and Executive Chairman Rick Willmott—John's direct descendant—we proudly remain a privately-owned construction and interior fit-out group committed to this founding principle. Our passion lies in delivering work that improves life opportunities and creates sustainable legacies for our customers and communities.

Being privately owned gives us a unique perspective—we can focus on long-term impact rather than short-term returns, allowing us to invest in what truly matters: our people, our communities, and our planet.



AIRSIDE SERVICES

Speedy Hire provides dedicated airside services with one point of contact for all airport contractors.

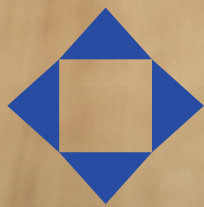
- 24 Hour Service
- Dedicated Airside Vehicles and Engineers

This is supported by our range of complementary services:

- Consumable and PPE Sales
- Equipment Hire
- Health and Safety Services
- Inspection Services
- Sustainability and Environmental Advice
- Training
- Waste Assurance Services

For all general enquiries on airside services, please email **airports@speedyhire.com** or call **0345 8500 747**





London
Stansted
Airport

MEET THE BUYERS

Our Sponsors & Exhibitors



kinetics
MARKETING, CREATIVE DESIGN & WEB



Crown Oil
Fuels and Lubricants

BT Lerson

Stand E1

Event Partner



About

BT Lerson is a leading fabrication company, offering high-quality services from small metalwork fabrication to large complex construction projects

As a UKCA accredited company, we hold ISO9001:2015 & AS9100D (dual certification) and ISO1090-1:2009+A1:2011, demonstrating our commitment to meeting the highest standards in structural fabrication

We hold SafeContractor, Constructionline, Builders Profile and SSIP certifications

With a dedicated team of experienced coded welders and steel erectors, we deliver precise and reliable structural fabrication solutions

Our state-of-the-art facility allows us the capability to provide precise and efficient solutions, from start to finish, tailored to the needs of our clients.

Crown Oil

Stand E8

**Diamond
Sponsor**



Crown Oil
Environmental

About

Crown Oil is a leading independent fuel supplier with over 75 years' experience delivering reliable energy solutions across the UK. Renowned for exceptional customer service and nationwide coverage, we supply a range of fuels and lubricants to keep businesses, homes and industries running smoothly. From red diesel and heating oil to renewable alternatives like HVO, we work around-the-clock to ensure customers receive the right products when they need them most.

As part of the Crown Oil Group, Crown Oil Environmental complements this service by helping organisations manage fuel more responsibly. Specialists in planned preventative maintenance services and environmental risk management, we ensure that customers not only secure a dependable fuel supply but also protect their assets, reduce downtime and meet strict environmental regulations. With sustainability at the heart of everything we do, our services are designed to reduce waste, extend fuel life and minimise environmental impact.

Together, we provide a complete energy and environmental management solution. We're committed to supporting our customers through dependable supply, technical expertise and sustainable practices that prepare businesses for the future of energy. Our aim is simple: to deliver the fuel and services you need today while helping to safeguard tomorrow.

With our delivery fleet run on HVO fuel and a significant reduction in our Group emissions via a range of sustainable initiatives, we're the first UK fuel company to be certified carbon neutral to ISO 14068-1 with our net zero targets certified by BSI. We aim to achieve net zero direct emissions by 2030.

GAP Hire Solutions

Stand E6

Event Partner



About

GAP Hire Solutions leads the UK's equipment rental industry, offering an extensive range of construction equipment for all sectors. With 10 divisions and nearly 200 locations nationwide, we provide reliable solutions in Plant, Tools, Welfare Services, Non-Mechanical Plant, Pump, Power & Environmental Services, Trenching & Shoring, Tanker Services, Lifting Services, Survey & Safety and Event Services. As a family-owned business with over 50 years of experience, GAP reinvests a higher percentage of our turnover into our fleet than our competitors, ensuring customers benefit from access to world-class equipment. Our independence allows us to make quick, long-term decisions, delivering effective solutions.

Hampton by Hilton

Stand E9



About

A quick walk to planes and trains – We are only a five-minute walk from London Stansted Airport's terminals. The railway station beneath the terminal building gives you easy access to London Liverpool Street, Cambridge, and other UK destinations. Relax in our bar lounge and start your morning with free hot breakfast, served from 4am. We have 24-hour fitness and business suites for your convenience, and Wi-Fi is on us.

Stansted Airport College

Stand E12



Stansted Airport College
Part of Harlow College

About

We take your learning seriously and pride ourselves on equipping you with the skills you need to prepare you for the workplace, an Apprenticeship or for further study at college or university.

We have a purpose-built facility and state-of-the-art resources, so that our students are used to working in a professional environment.

Our teaching staff have industry expertise and our excellent employer links and work placements give our students the first rung on the career ladder – you can see some of the fantastic opportunities in the case studies provided in our Guide. Our staff and students are here to help you make the right choice for your future. Please make sure you ask all the questions you need to make an informed choice and find out if this is the right place for you – we do hope it is!

Nationwide Platforms

Stand E11

Event Partner



About

Part of the Loxam Group, Nationwide Platforms are the UK's leading specialist provider of Powered Access rental equipment, with the largest and broadest fleet, local depots spread across the country and our wealth of experience partnering with companies in a variety of sectors including Construction, Warehouse & Distribution, Aviation, Facilities Management, Industrial Services, Telecoms and Media, our customers can depend on us to provide the right solution to support their every working at height need.

At Nationwide Platforms, your safety is absolutely our priority. Our award winning BlueSky Solutions and Training division offer our customers access to the latest and safest ways to work and through long standing partnerships with our manufacturers, we will always provide equipment that will lead the way to a safer industry. Some of our innovations include the award-winning secondary guarding systems and Harness ON™, a range of pioneering Material Handling Attachments (MHAs), and the SkySentry™ control and monitoring system.

We are Europe's market leading specialist Powered Access Training provider, offering a wide range of courses backed by some of the leading trade bodies including IPAF, PASMA, IOSH and the Ladder Association, training more than 22,000 delegates each year.

For further information please head to <https://www.nationwideplatforms.co.uk/>.

NWF Fuels

Stand E4

Event Partner



About

As the UK's third-largest oil supplier, NWF Fuels is the trusted choice of over 100,000 customers nationwide. From homes and farms to businesses of all sizes, we deliver high-quality fuels—including premium products—right where they're needed.

With a network of local depots and expert teams, we're fanatical about service, offering flexible delivery options, competitive pricing, and year-round reliability. Plus, businesses can fuel smarter with our fee-free NWF Fuel Card, unlocking savings at over 3,500 fuel stations across the UK.



The UK's largest rental equipment provider delivering tailored solutions for the aviation sector.

Our 4,000 strong team with experts from 25 different disciplines provide a 360 managed solution for any project, no matter how large or complex, with cost and carbon savings built in from day one.

We will deliver the equipment you need, whenever and wherever you need it. Leaving you free to concentrate on your core business, knowing that your equipment is being looked after by trusted experts.



Floor Care & Maintenance



Lighting



Energy



Site Welfare & Storage



Traffic Management



Fencing & Barriers



Plant & Tools



Plant Attachments



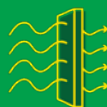
Access Equipment



Safety & Communications



Climate Control



Air Quality Control



Utilities



Test & Monitoring



Temporary Bridges



Rail



Hoists



Lifting



Survey



HVAC

airports@sunbeltrentals.co.uk | 0208 0169 569

Paragon

Stand E7

Event Partner



About

For over a decade, Paragon Stainless has been at the forefront of designing and manufacturing high-quality stainless steel products tailored to our clients' exact requirements.

While we specialise in GRADE 316L stainless steel, increasing demand means we now also offer our products in GRADE 304.

Our expertise began with drainage solutions, but our capabilities extend far beyond. Today, we also create a stunning range of spa and leisure products, including Hydrotherapy Loungers, Water Blades, Water Spouts, Ice Baths, Swimming Pool Steps, and Handrails — all crafted with precision and style.

Every project is designed and manufactured in our Essex workshop by a skilled team of designers and engineers, ensuring the highest standards from concept to completion.

Paragon Stainless – delivering excellence through bespoke stainless steel solutions.

Poppypod

Stand E2

Event Partner

poppypod

About

Poppypod is a standalone sensory pod designed to transform the passenger experience in airports. Step inside, and travellers are welcomed into a calm, softly lit environment with gentle acoustics and soothing sensory features, a private retreat from the noise, crowds, and stress of travel.

Unlike sensory rooms, Poppypods can be placed exactly where support is needed most at gates, near security, or in transfer zones, ensuring help is available at critical points in the journey. Compact and low maintenance, each pod operates independently and integrates seamlessly into airport spaces.

Our secure management portal provides real-time usage data, giving airports the ability to track demand, prove efficacy, and demonstrate a measurable commitment to accessibility.

With Poppypod, airports can deliver a flexible, future-ready solution that not only complements existing sensory facilities but also enhances inclusivity, reduces passenger stress, and supports smoother journeys for all.

Prolectric

Stand E13

Event Partner



About

At Prolectric, we engineer off-grid Solar Lighting and Power products that are an alternative to traditional mains or diesel-powered products. We have installed over 10,000 solar streetlights up and down the UK and were UK's first manufacturer. Since 2011 we have proven our solar lights work consistently in the UK, even during a Scottish winter. Our solar lights save customers thousands of pounds on grid connections, cabling and installation, and ongoing cost of power.

We also provide the world's most advanced Solar Generators and Solar Temporary Lighting Towers. As the UK solar and battery experts we have created products that are smart and autonomous, enabling remote management and monitoring for complete peace of mind.

On average, our solar generator saves customers on average £14,500 annually on diesel and maintenance. Over a typical 7-year period, users save £88,000 per unit. It also reduces the CO2 emissions by over 25,000 kgs per annum.

Speedy Hire

Stand E3

Event Partner



About

Speedy Hire Plc is the UK's leading provider of tool, equipment, plant hire and specialist services to the construction and infrastructure sectors. The Company employs over 3,300 people, operating across 180 trading locations in the UK. Its ambitious sustainable growth strategy is focused on continuous innovation to deliver commercially sustainable specialist products and solutions for customers to meet their carbon reduction targets.

Speedy Hire's industry-leading and award-winning ESG strategy 'The Decade to Deliver' is driving its commitment to become a net zero business by 2040, ten years ahead of the UK Government target. As the first UK hire company to sign up to science-based targets Speedy Hire provides an extensive range of commercially sustainable products to reduce carbon emissions for its customers. It operates the largest electric commercial vehicle fleet in the industry, and its flagship Innovation Service Centre located in Milton Keynes holds a rare A+ EPC rating and provides the blueprint for the Company's future state property network. Speedy Hire Plc is independently rated by the Financial Times as a European Climate Leader, holds a silver EcoVadis rating, is a member of the UN Global Compact Network, and is ranked as an industry leader for sustainability with an ISS Prime status.

Sunbelt Rentals

Stand E10

Event Partner



About

Sunbelt Rentals is part of the FTSE 100 listed Ashtead Group, a global leader in equipment rental and the largest provider in the UK & Ireland. Our 4,000 strong team includes experts across 25 different disciplines supporting customers nationwide. Together we're redefining the future of rental. We offer a complete 360 managed solution for any contract, no matter how large or complex, with cost and carbon savings built in from day one. We'll deliver the equipment you need, whenever and wherever you need it. Leave the how to us.

Uttlesford Council

Stand E5

Event Partner



About

The Economic Development team are on hand to offer support and signpost you to the most relevant business advice services and finance available to help local businesses thrive.

The Councils Corporate Plan 2023-27 outlines our long-term economic vision:

"We will support and promote a vibrant and diverse economy by attracting investment, facilitating business growth, enhancing skills and employability, and improving connectivity and infrastructure."

Uttlesford is open for business, and we are keen to create a district where business leaders and entrepreneurs can be confident to make their home. We want to help budding entrepreneurs to start-up, support businesses already based here to flourish and attract new investment.

Think Uttlesford for your business.



UTTLESFORD
BUSINESS >>

**Business
Awards
2026**

AWARD CATEGORIES

**Best
Tradesperson**

Rising star

**Young
Entrepreneur**

**Creative
Champion**

**Commitment
to Community**

**Environmental
Impact**

**Tourism &
Culture**

**Best Food &
Drink Venue**

**Retailer
of the Year**

**Health, Beauty &
Wellbeing**

**Youth &
Education**

**Best Customer
Service**

SPONSORED BY



**London
Stansted
Airport**

ENTER NOW

business.uttlesford.gov.uk/awards





London
Stansted
Airport

MEET THE BUYERS



kinetics
MARKETING, CREATIVE DESIGN & WEB



Crown Oil
Fuels and Lubricants